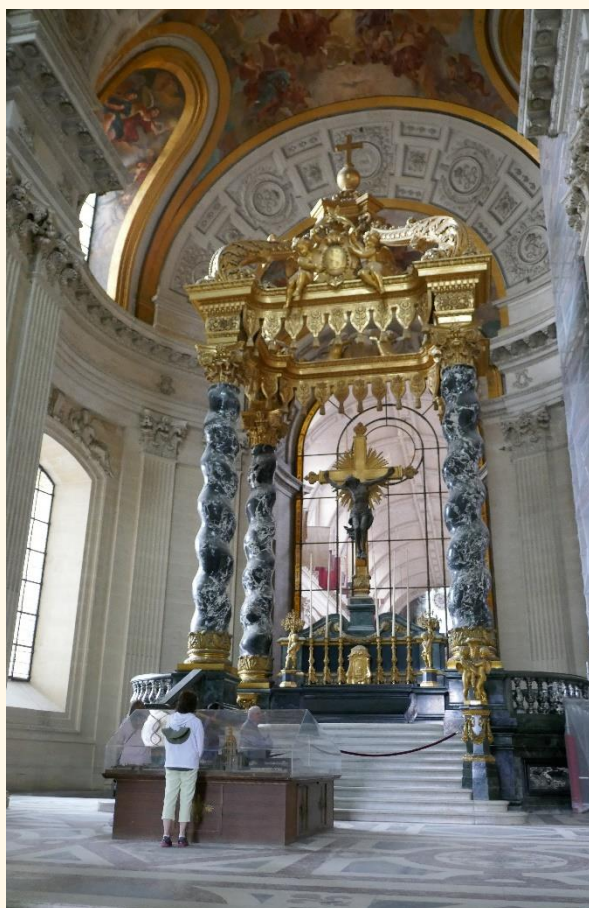
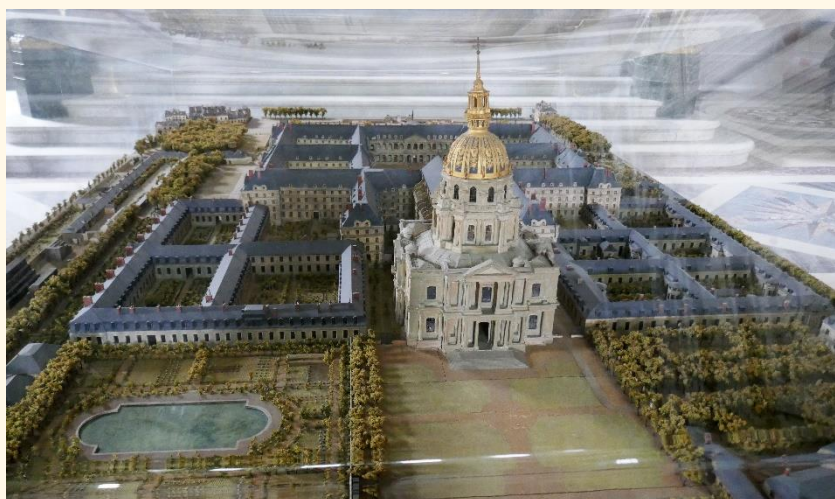


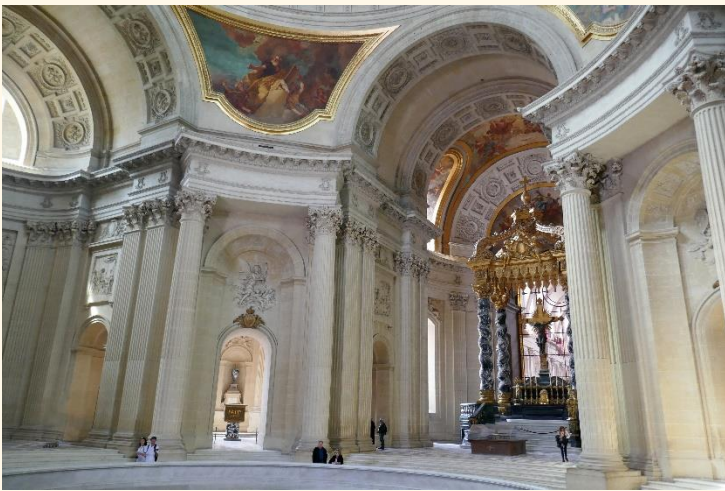
PÁRIZS

2018. május

Látogatás a Hôtel National des Invalides-ben Napóleon sírjánál és a Musée de l'Armée-ben

(képek szöveg nélkül)

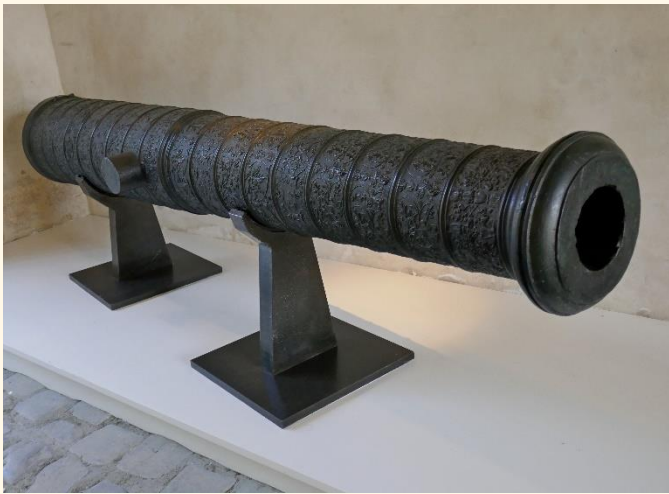


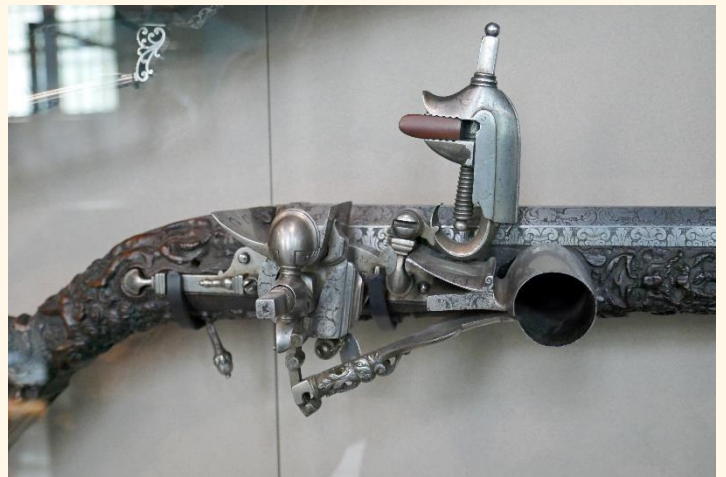


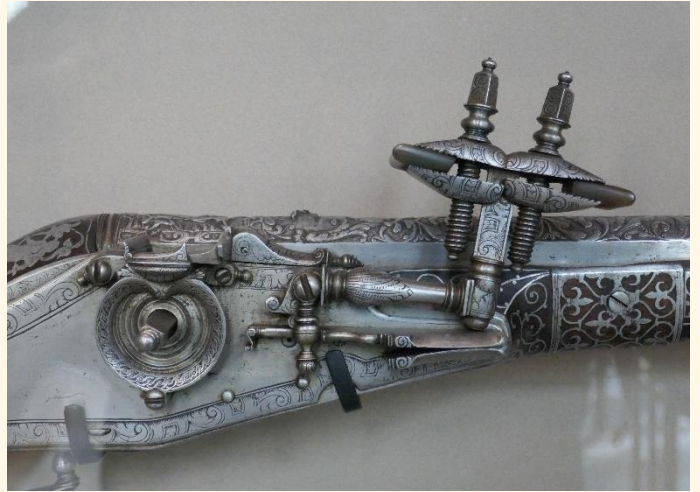
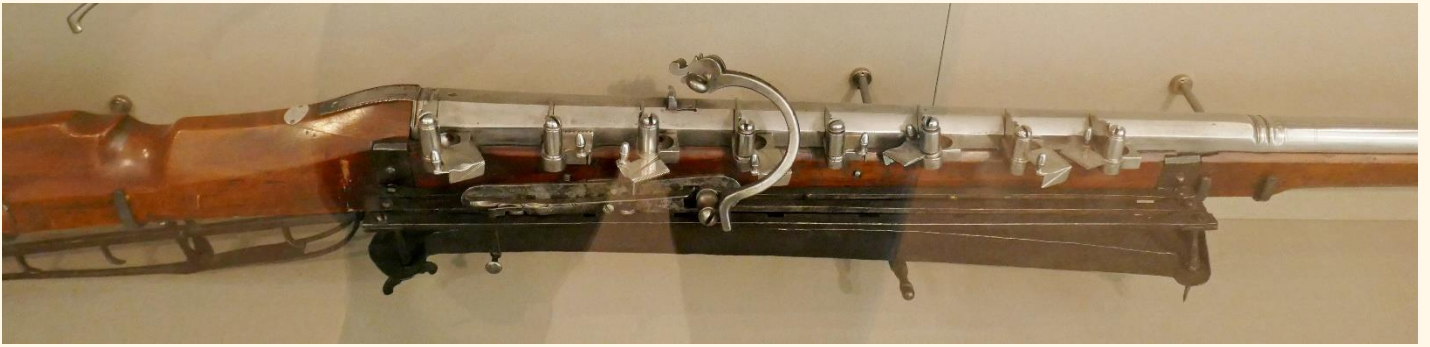




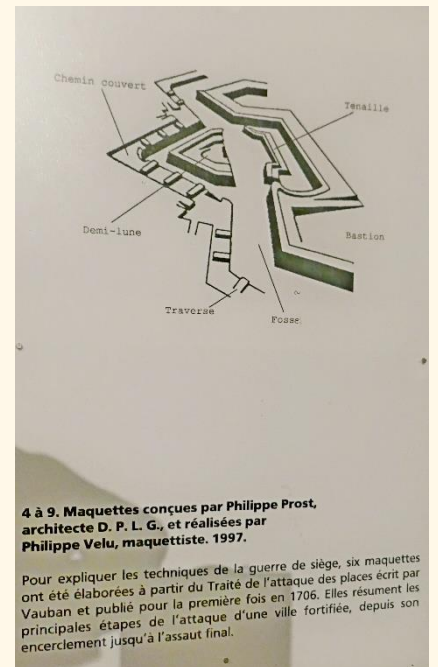


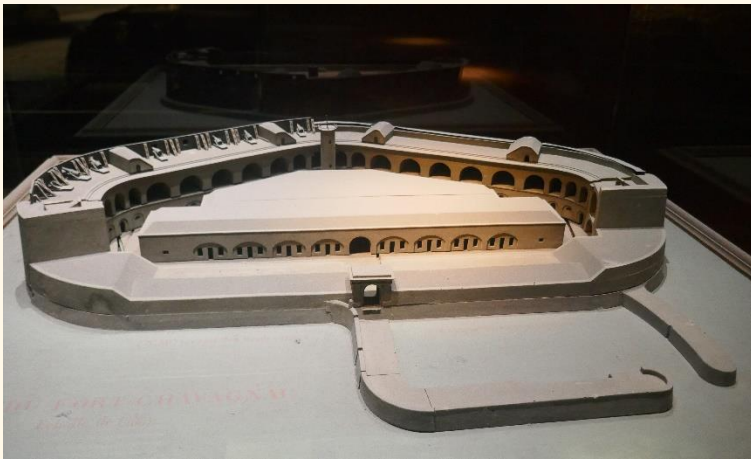












There are over 100 artillery models in this room. Based on the appearance and diverse dimensions of these objects, one can identify the intentions that led to their creation.

Designed and built with precision on a very specific scale, these models minutely reproduce the most specific details of the guns that were used in the armies of the past. Some of them are the only physical witness we have to pieces of artillery that have now disappeared. Although most of these models can be fired, they are not weapons.

Gifts of excellence presented to honor a glorious feat of arms or an exemplary military career, some of these small cannons bear the coat of arms of their distinguished owners. Ultra-miniaturised and crafted in precious materials, they remained very popular art pieces amongst the nobility until the beginning of the 19th century.

LAYOUT OF THE EXHIBITION

- Royal pieces are displayed next to a small number of diplomatic gifts that were given to French monarchs. Gunfounders, engravers, gilders and woodworkers applied all of their expertise and talent in the creation of these objects destined to honor their owners. Other private pieces are exhibited along with these prestigious items.

- The central showcase, dedicated to the Gribeauval system, displays a collection of small-scale models of the first artillery system adopted by the French Army.

- The displays entitled Inventions and innovation projects and Artillery Heritage and History present models prototypes and faithful reproductions of pieces of equipment used by the French artillery during the 19th century.

